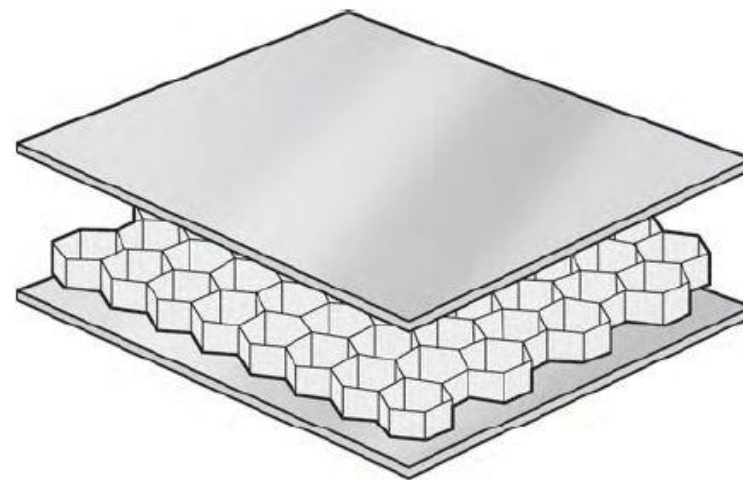
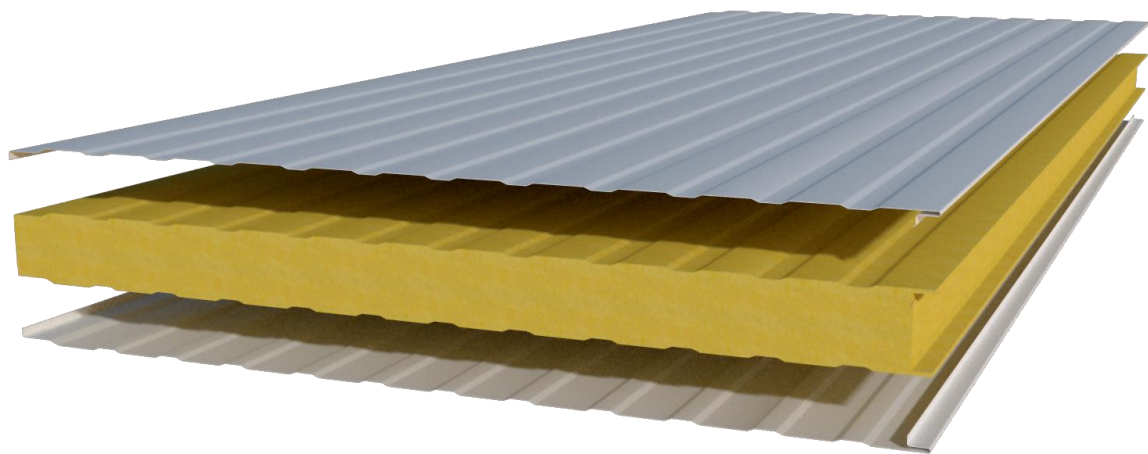


ANYAGOK

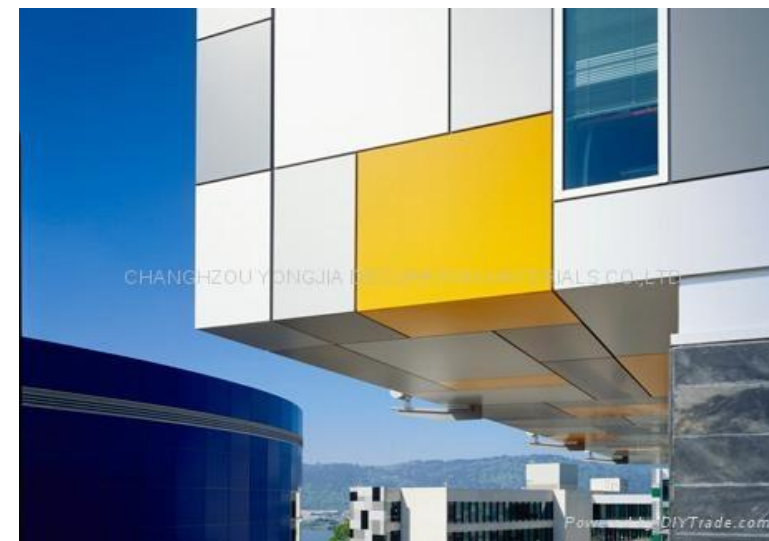
Szendvicspanel / Szálcement / Beton / Fém / Üveg / Tető

Gosztonyi András / Gedeon Tekla / Hargitai Bence

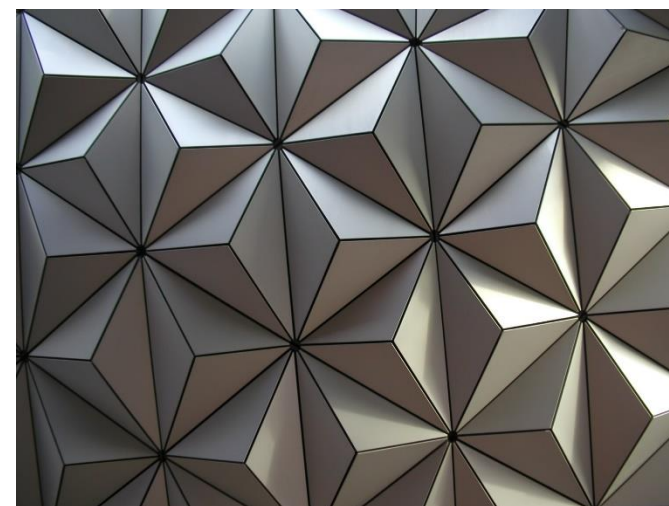
SZENDVICSPANEL



SZENDVICSPANEL



SZENDVICSPANEL

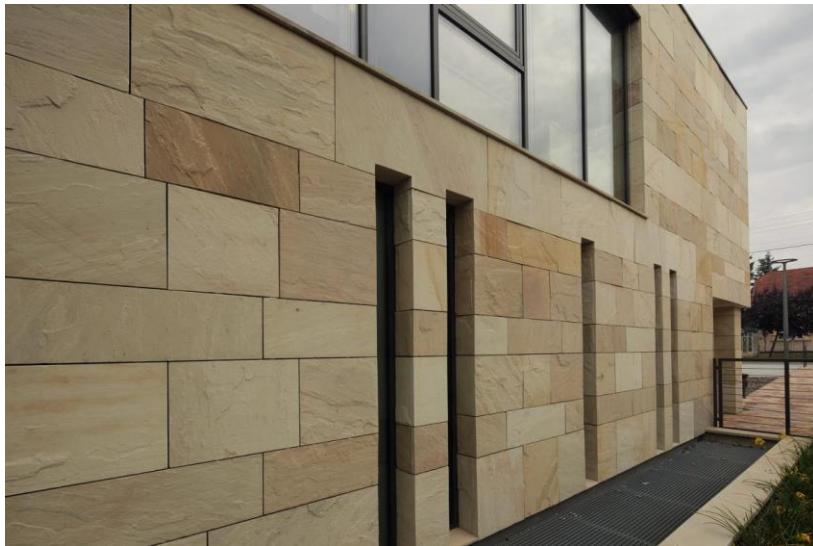


SpaceShip Earth

SZÁLCEMENT



FA, KŐ

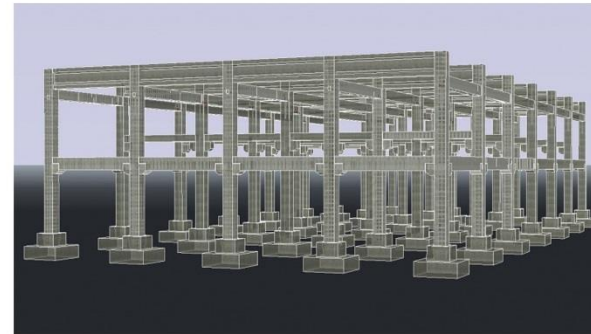
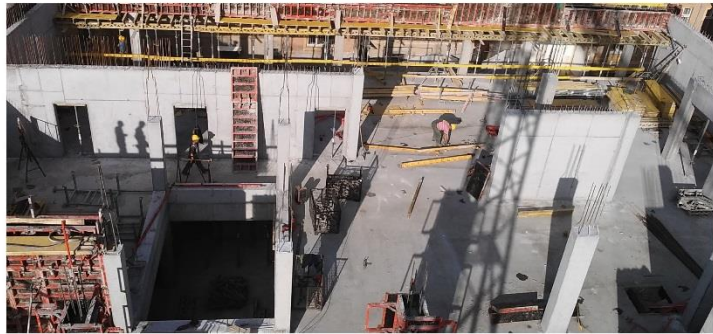


B E T O N

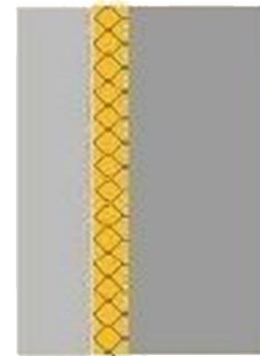
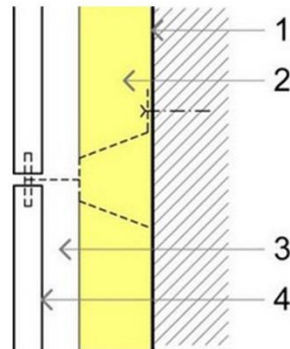
VASBETON

Vázszerkezet:

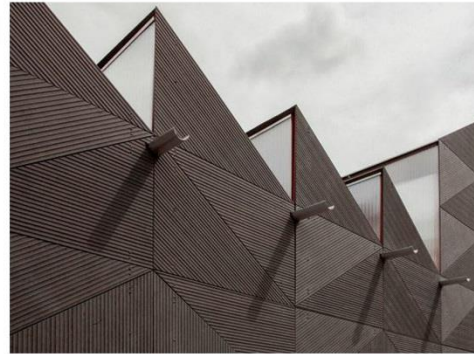
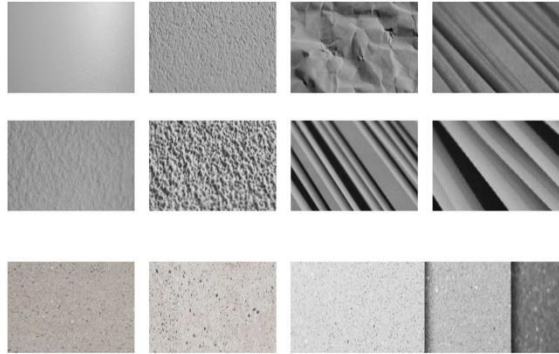
- monlit / előregyártott



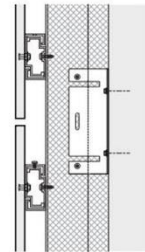
- tartószerkezet (hátfal) / nyers homlokzatburkolat



BETON HOMLOKZATBURKOLAT



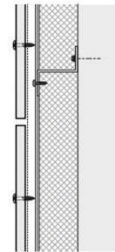
Rainscreen | Undercut Anchors



See Fig. 1.1



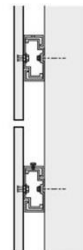
Rainscreen | Exposed Direct Fastener



See Figure 1.2



Close Cladding | Undercut Anchors



See Fig. 1.1



Z-Clip Interior Cladding | Undercut Anchors



See Fig. 1.1

FÉM

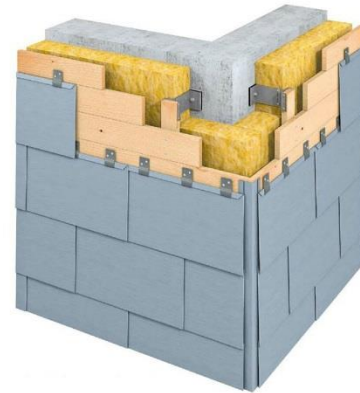
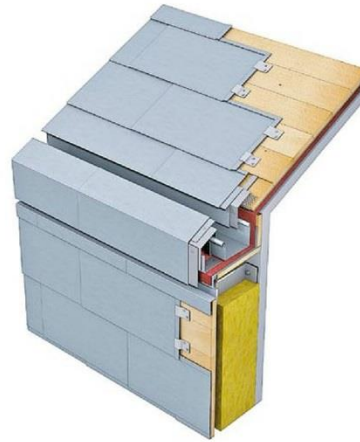
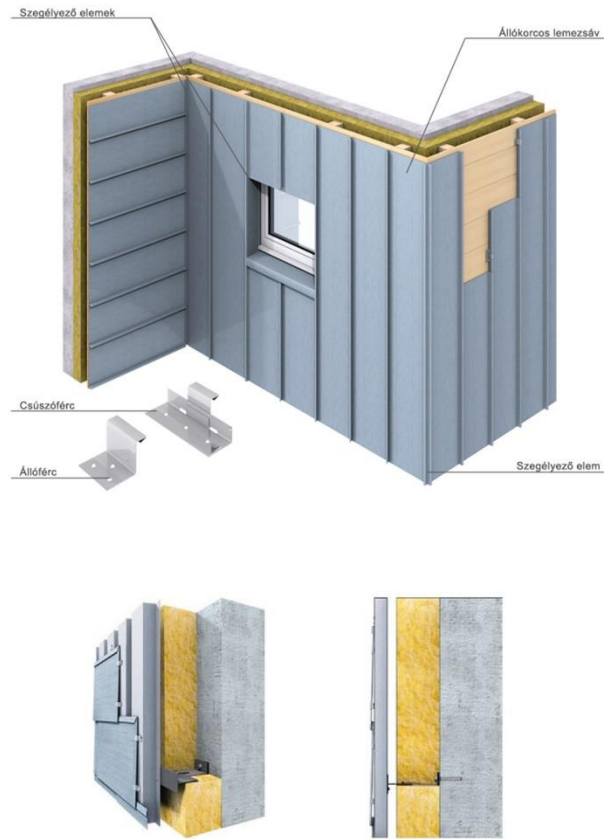
FÉM

- anyag: cink / aluminium / réz /stb.
- korcolt / paneles / kazettás / hullámprofil

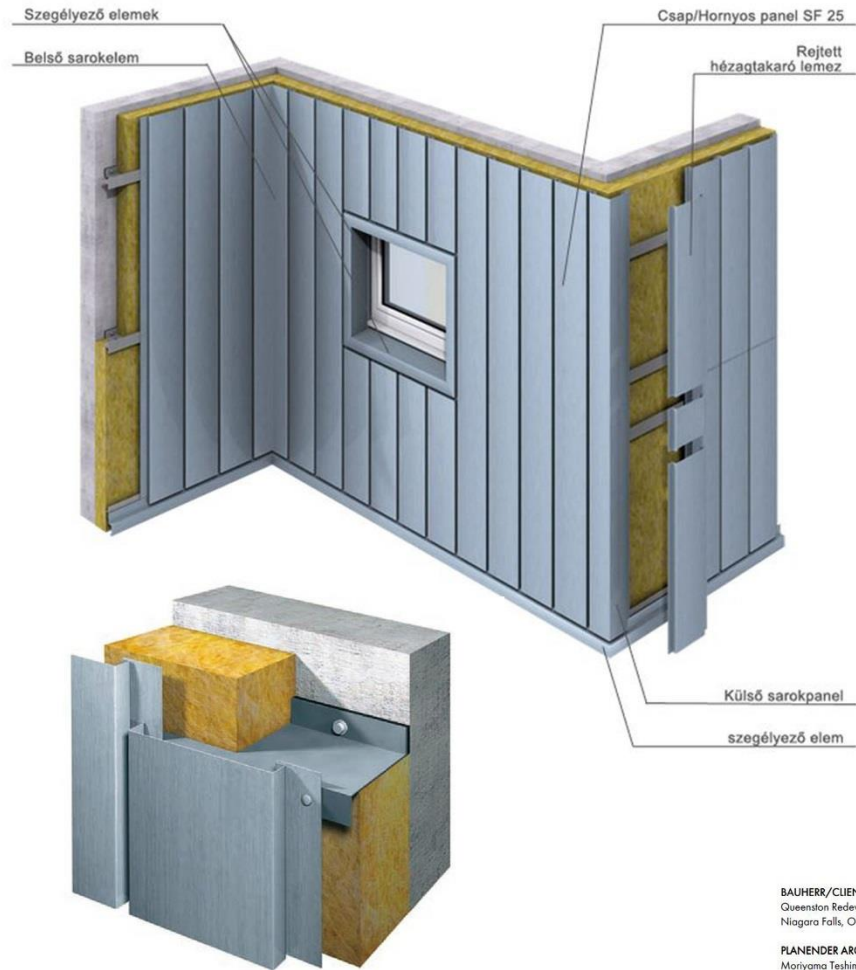


FÉM: KORCOLT

– derékszögű / rombuszos szerkesztésű



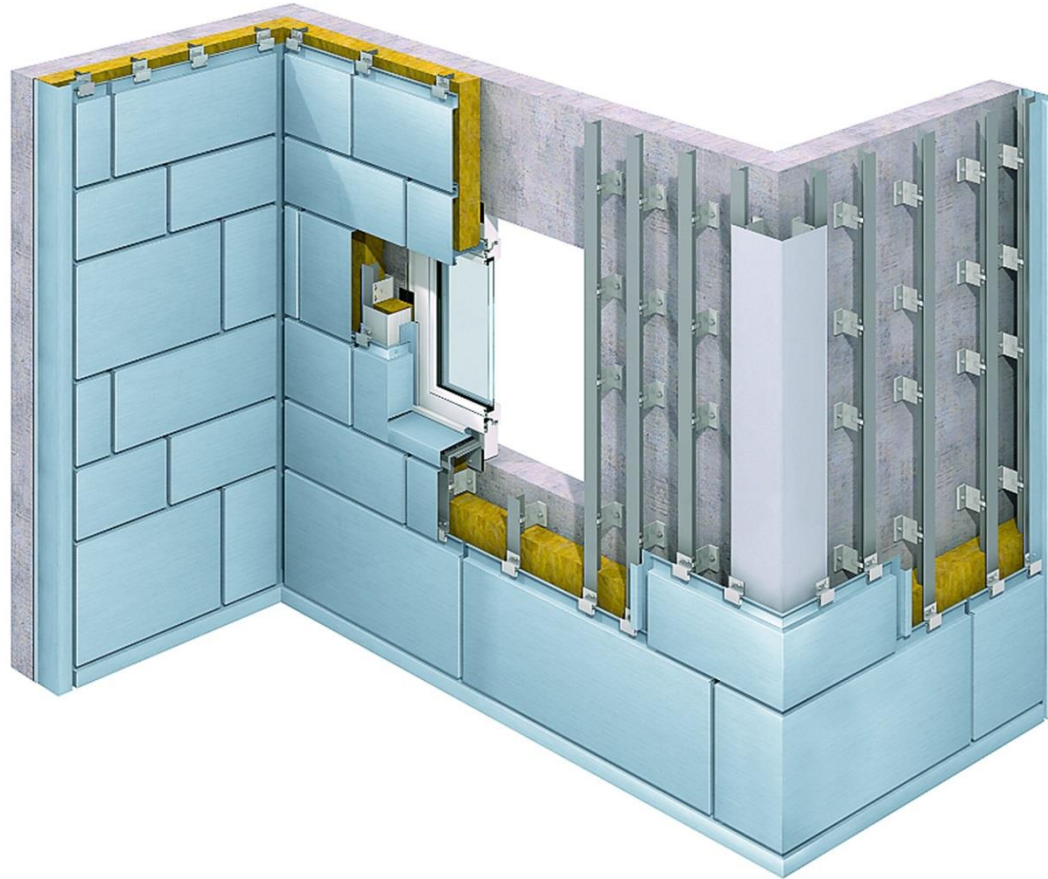
FÉM: PANELES



BAUHERR/CLIENT
Queenston Redevelopment
Niagara Falls, ON, Canada

PLANENDER ARCHITEKT/DESIGN ARCHITECT
Moriyama Teshima Architects
Toronto, ON, Canada

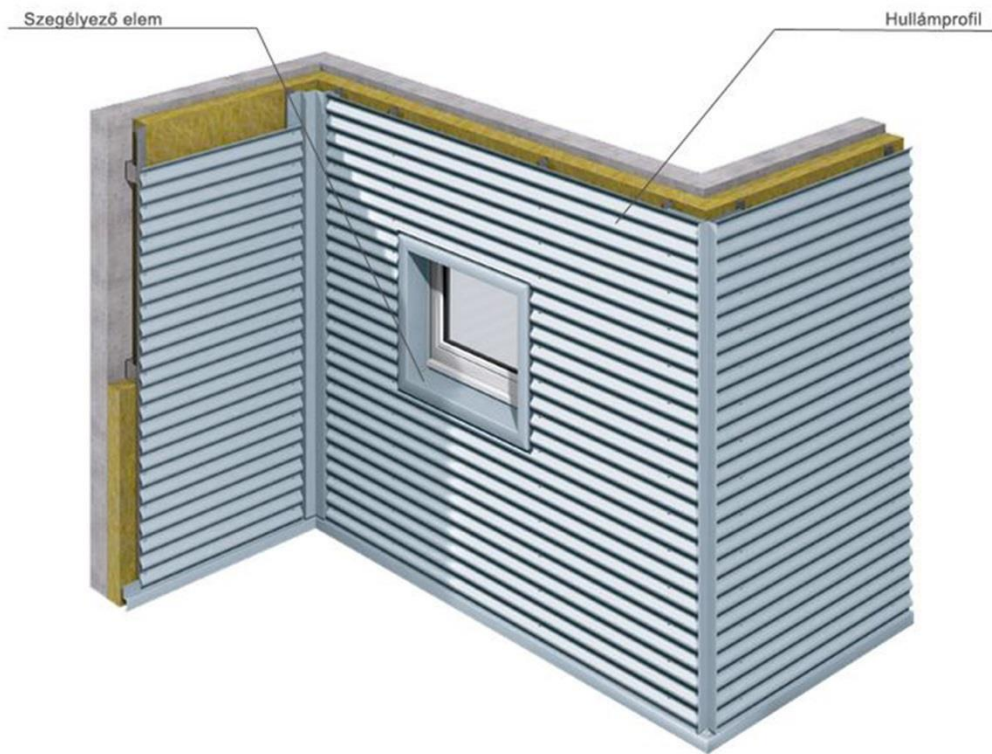
FÉM: KAZETTÁS



BAUHER/CLIENT
Admin. Communale
Wallerdange, Luxembourg

AUSFÜHRENDE ARCHITEKT/SUPERVISING ARCHITECT
Schroff et Ass.
Luxembourg, Luxembourg

FÉM: HULLÁMPROFIL

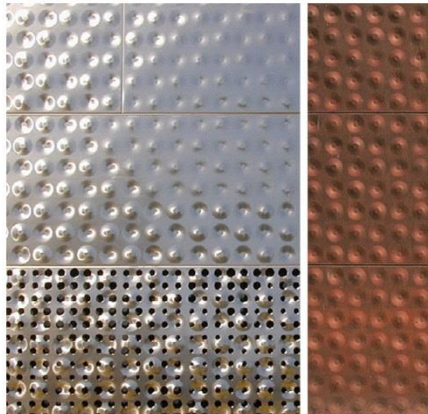
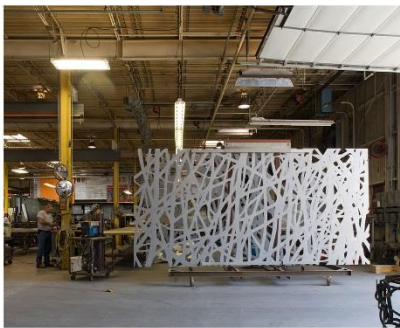


BAUHERR / CLIENT
Admin. Communale
Wallerdange, Luxembourg

AUSFÜHRENDE ARCHITEKT / SUPERVISING ARCHITECT
Schmit et Ass.
Luxembourg, Luxembourg

FÉM: ÁTTÖRT BURKOLAT RENDSZEREK

Zahner



Art Wall at HBKU
Doha University

de Young Museum
Herzog & de Meuron

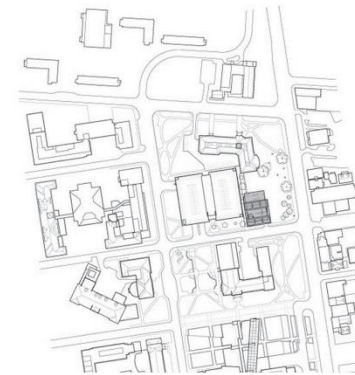
Dee & Charles
Wyly Theatre

The North Dock Expansion
at the Zahner Campus He-
adquarters

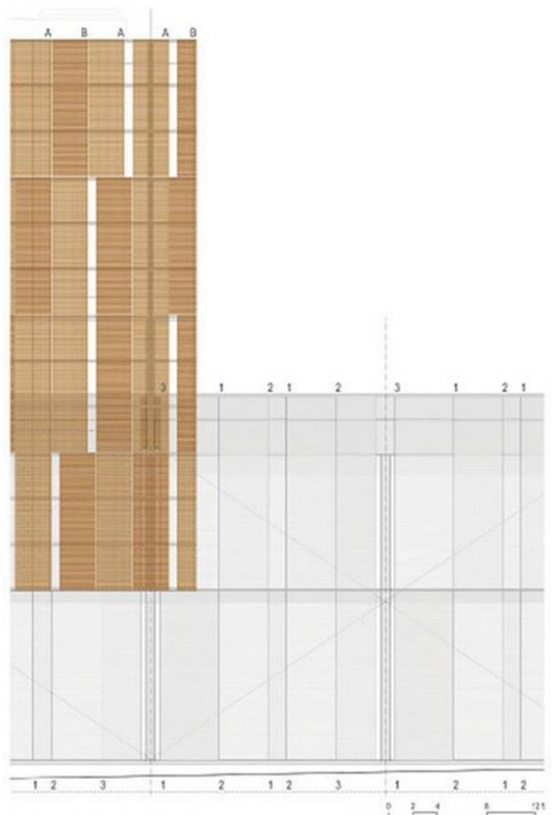
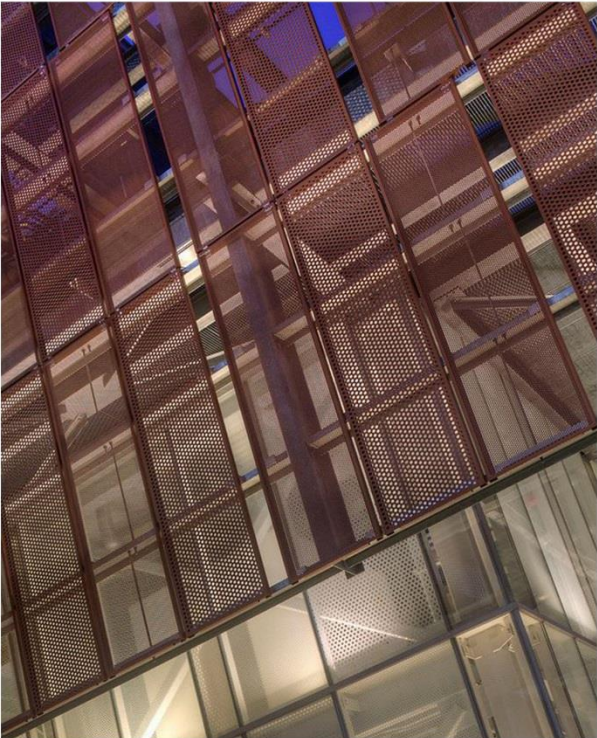
East Regional Chilled Water Plant Leers Weinzapfel Associates



East Regional Chilled Water Plant Leers Weinzapfel Associates



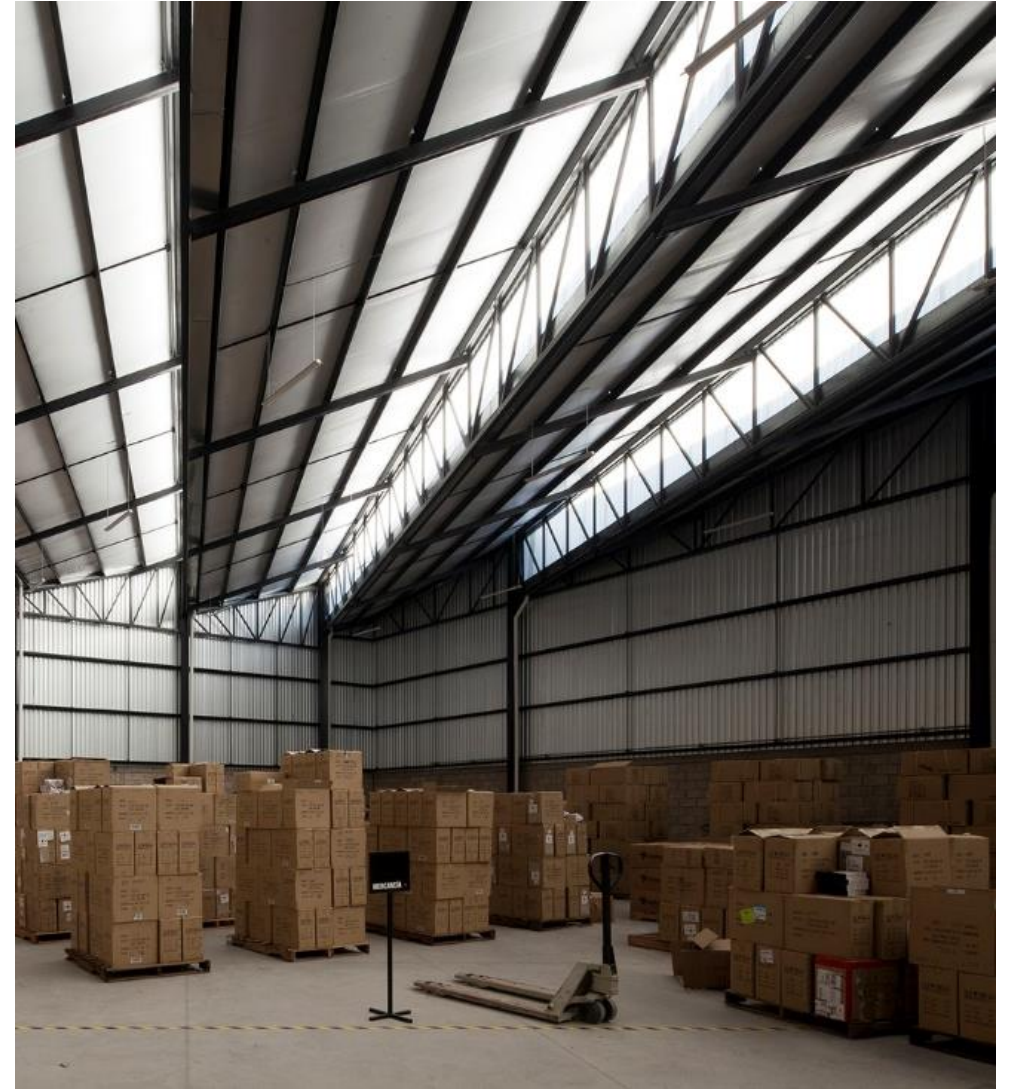
East Regional Chilled Water Plant Leers Weinzapfel Associates



A. METAL PANEL WITH 7/16" FRICTIONAL 45% OPEN
B. METAL PANEL WITH 1/2" PERFORATIONS 45% OPEN
1. TRANSLUCENT FRITTED GLASS WITH 7/16" FRICTIONAL 45% CLEAR GLASS
2. TRANSLUCENT FRITTED GLASS WITH 1/2" PERFORATIONS 45% CLEAR GLASS
3. TRANSLUCENT FRITTED GLASS WITH 1/2" PERFORATIONS 45% CLEAR GLASS

METAL & FRIT SCREEN PATTERNS

ÜVEG



ÜVEG



ÜVEG

