

**principia / komplex zh // 2016\_09\_29\_10\_03**

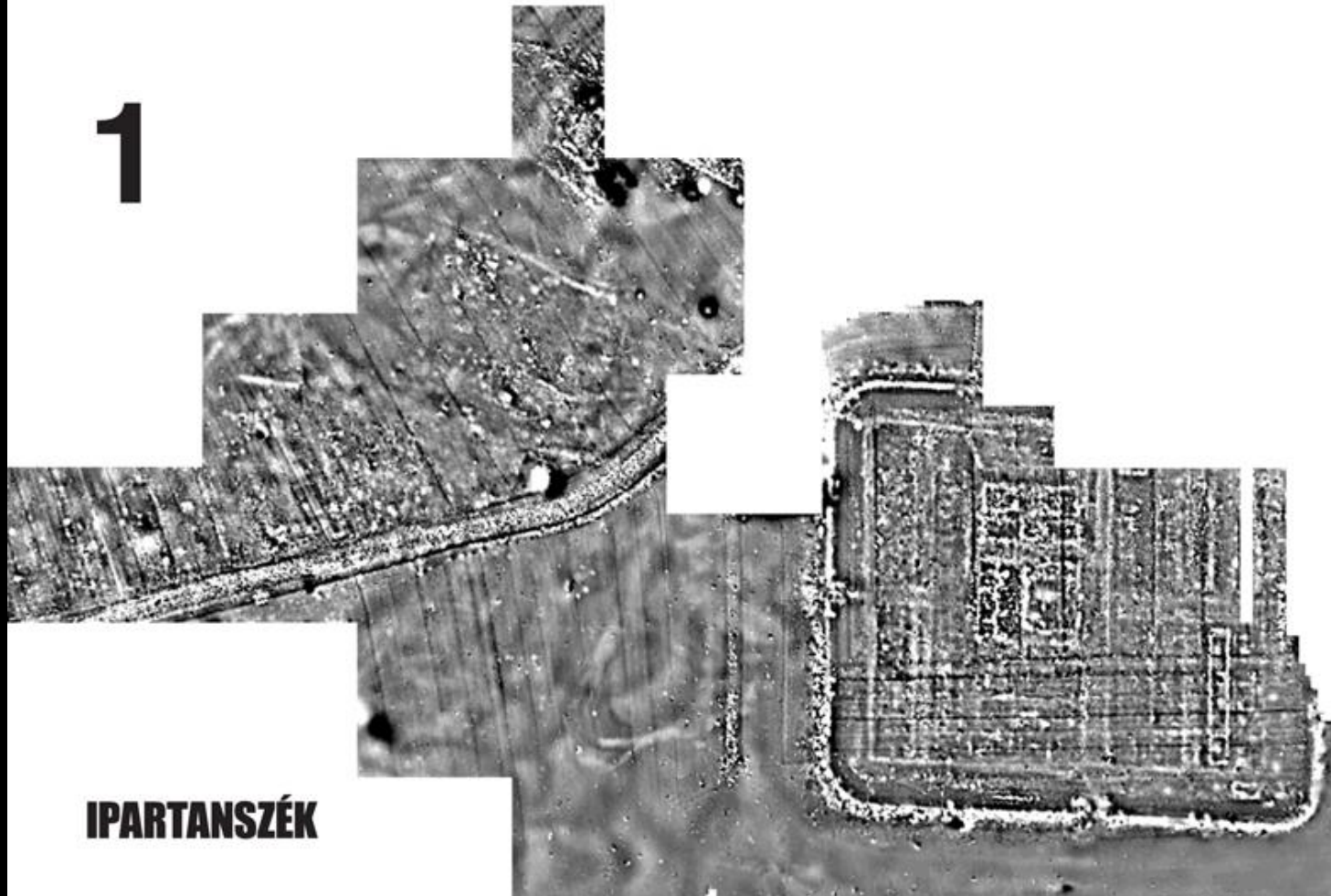


# THE ROMAN LIMES AS CULTURAL LANDSCAPE

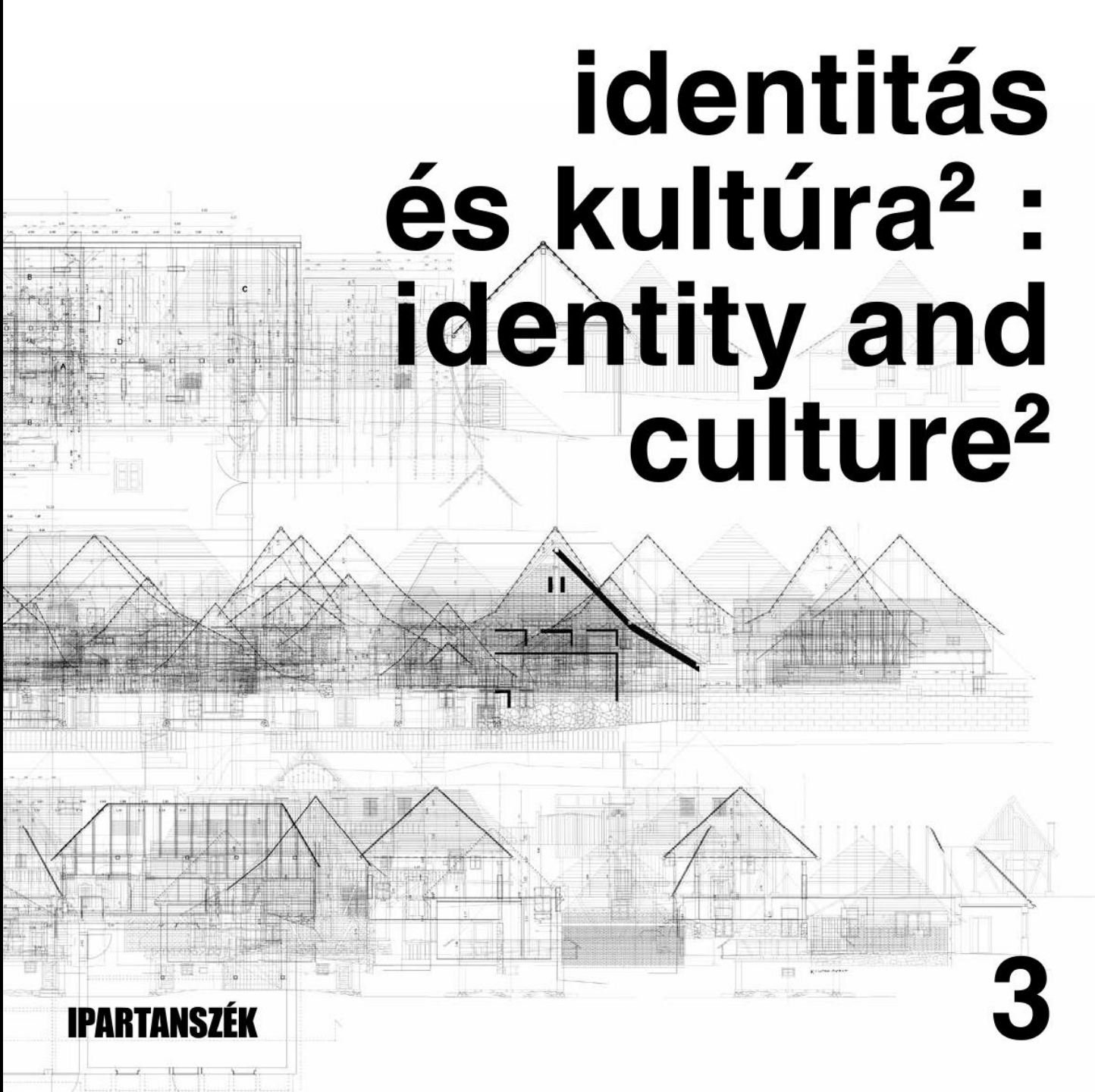
BME Építésztechnika Kar\_\_2013-2014 (2015, 2016)  
ERASMUS INTENSIVE PROGRAMME\_\_Erdély\_Maros Megye

# identitás és kultúra : identity and culture

1



**IPARTANSZÉK**

The background of the slide is a complex overlay of architectural drawings. It includes floor plans, cross-sections, and elevations of various houses, some with gabled roofs. The drawings are rendered in a light, semi-transparent style, creating a layered effect. A prominent drawing in the center shows a house with a gabled roof and a chimney, with a thick black line indicating a structural element or a path. The overall aesthetic is technical and architectural.

# identitás és kultúra<sup>2</sup> : identity and culture<sup>2</sup>

**IPARTANSZÉK**

**3**



# identitás és kultúra<sup>3</sup> : identity and culture<sup>3</sup>



**IPARTANSZÉK**

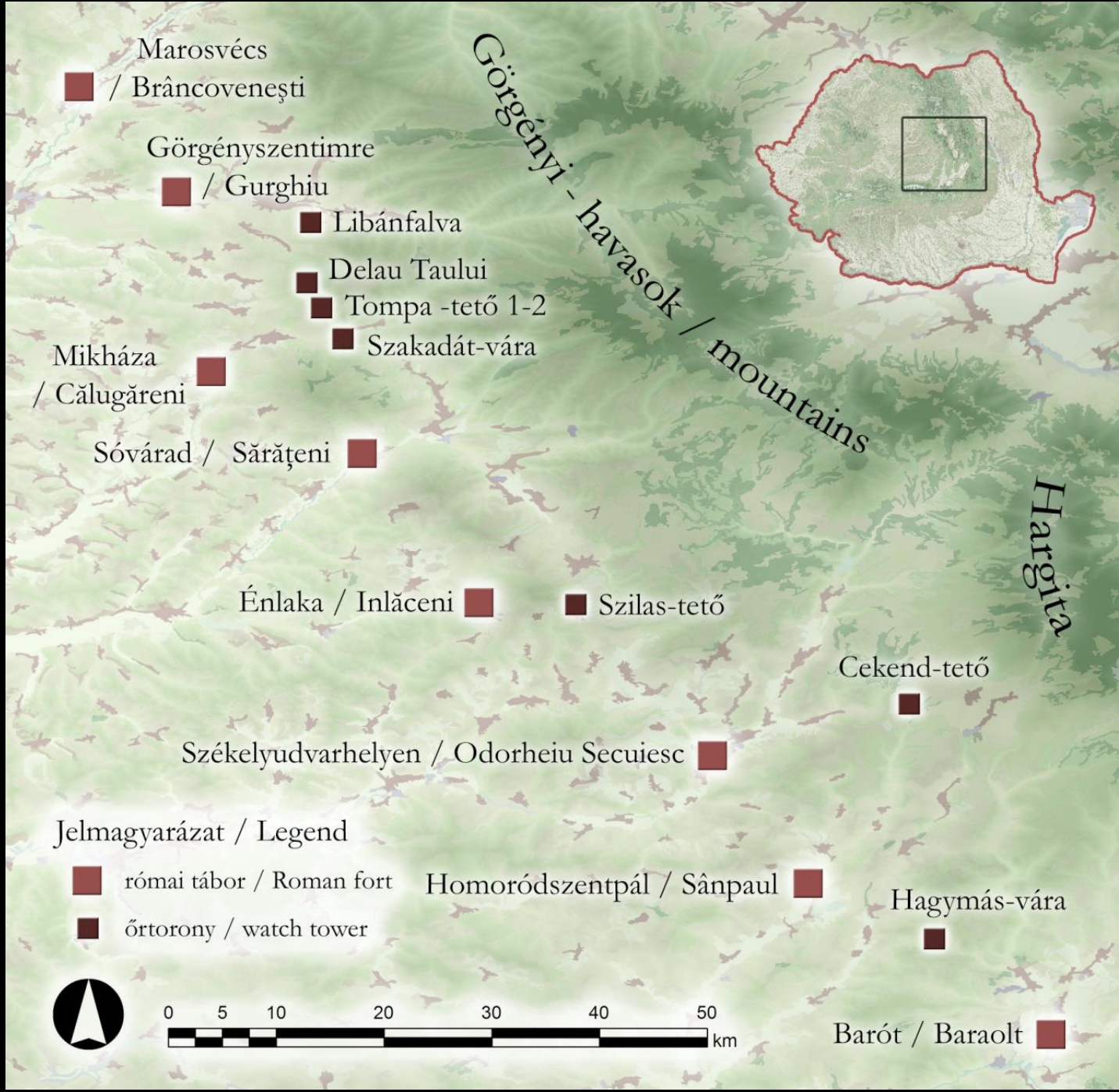
**4**

# GRANIȚELE IMPERIULUI ROMAN LA MIJLOCUL SECOLUI DOI D.HR.

- Graniță în timpul lui Antoninus Pius
- Granițe în timpul lui Hadrian
- Granițe de provincie







Marosvécs

■ / Brâncovenesti

Görgényszentimre

■ / Gurghiu

■ Libánfalva

■ Delau Taului

■ Tompa-tető 1-2

■ Szakadát-vára

Mikháza

/ Călugăreni

Sóvárad / Sărățeni

Énlaka / Inlăceni

■ Szilas-tető

Cekend-tető

Székelyudvarhelyen / Odorheiu Secuiesc

Homoródszentpál / Sânpaul

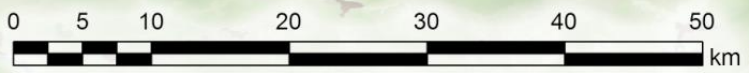
Hagymás-vára

Barót / Baraolt

Jelmagyarázat / Legend

■ római tábor / Roman fort

■ őrtorony / watch tower



Görgényi-havasok / mountains

Harghita

Humboldt-Universität zu Berlin – Institut für Archäologie  
Universität zu Köln – Archäologisches Institut  
University of Pécs – Archaeological Institute  
Loránd Eötvös University – Institute of Geophysics  
Babeş-Bolyai University Cluj – Archaeological Institute  
Fachhochschule Erfurt – Fachrichtung Konservierung/Restaurierung  
Budapest University of Technology and Economics – Faculty of Architecture





































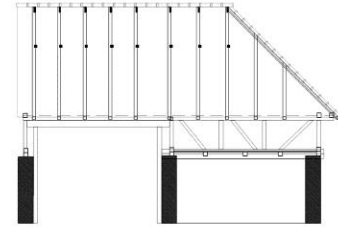
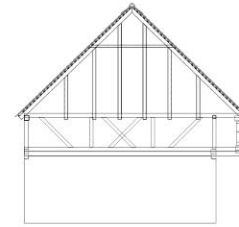
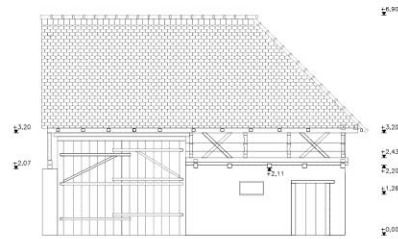
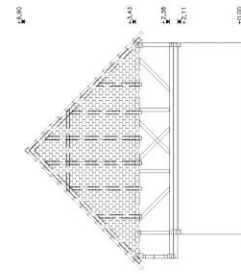
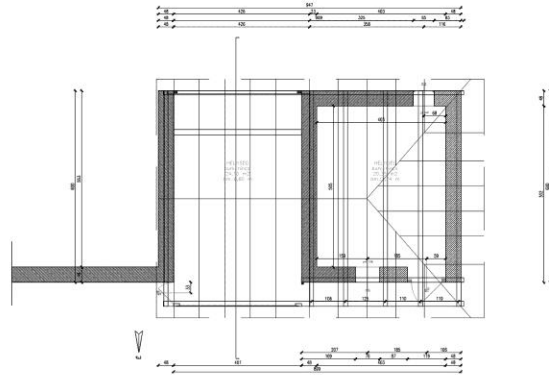
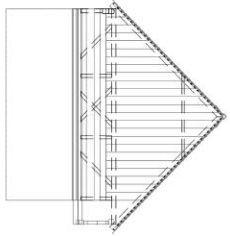
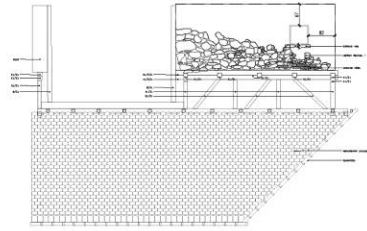
# M # 2013

előzmények

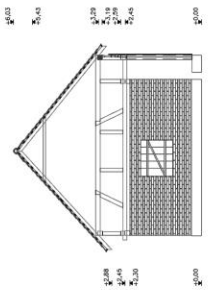
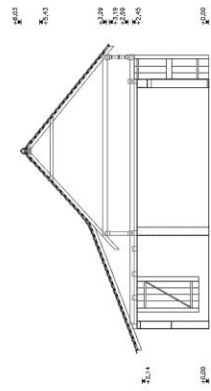
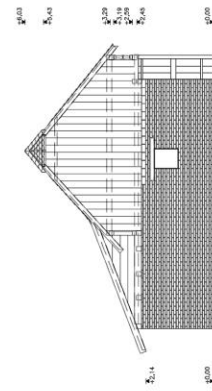
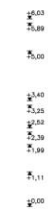
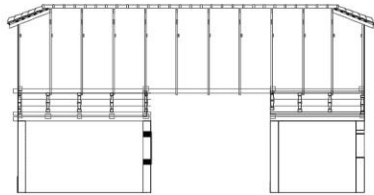
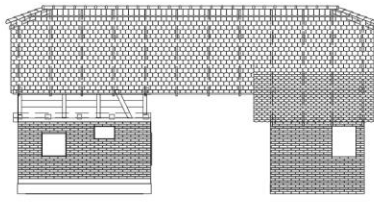
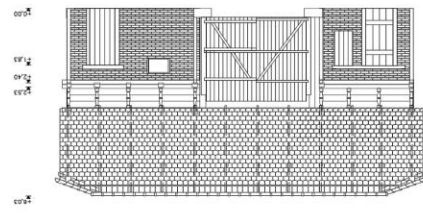
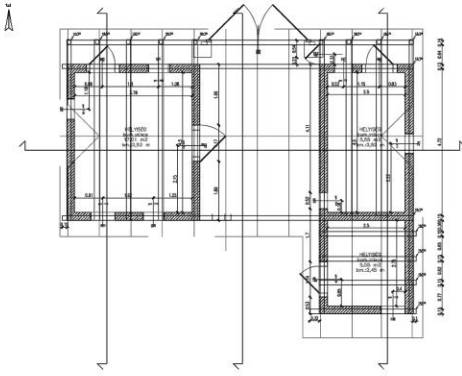
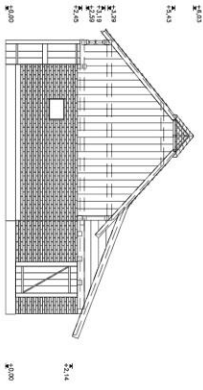


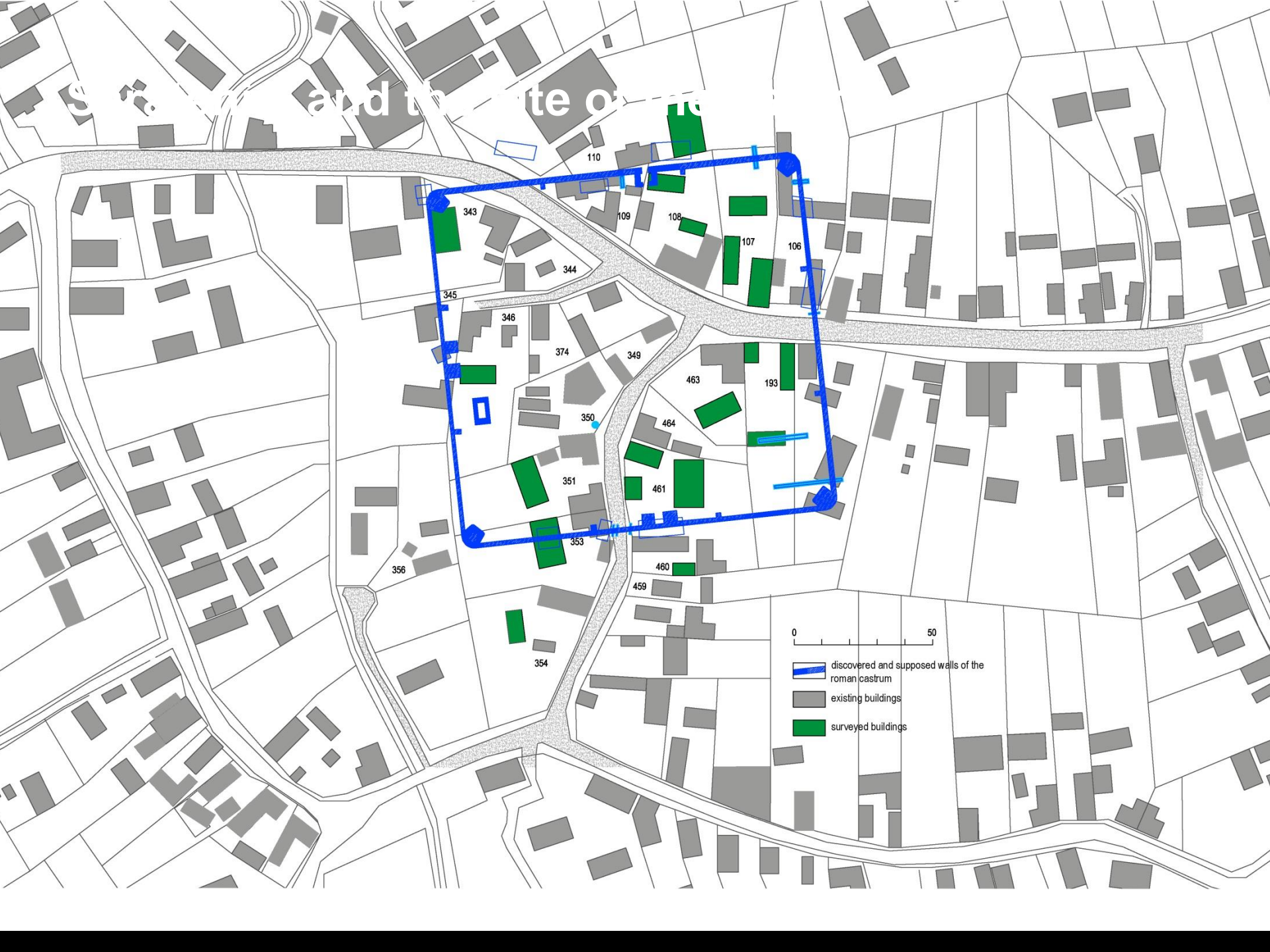






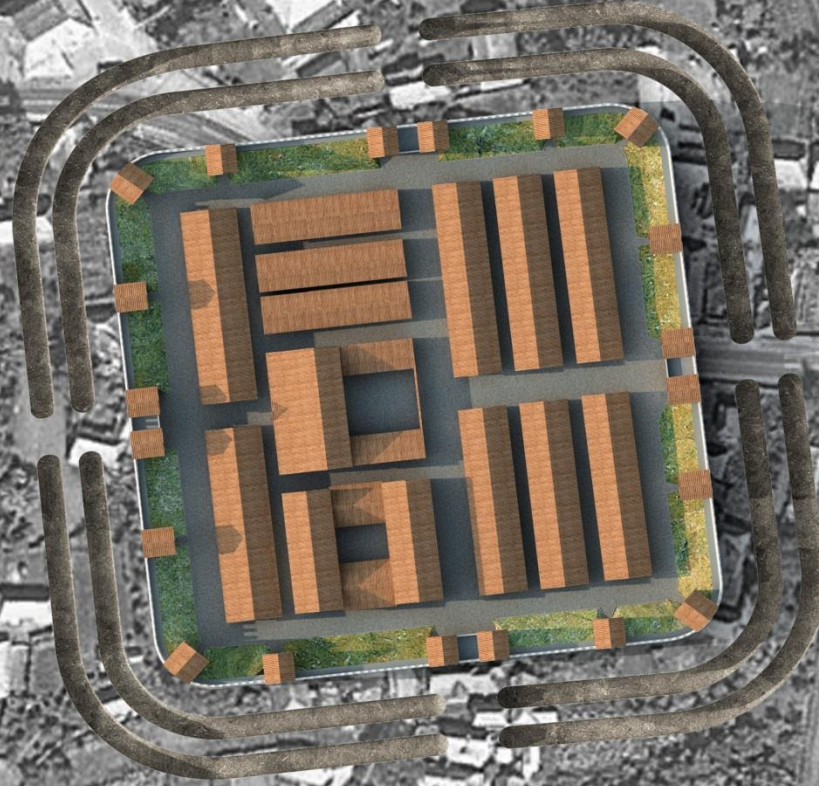






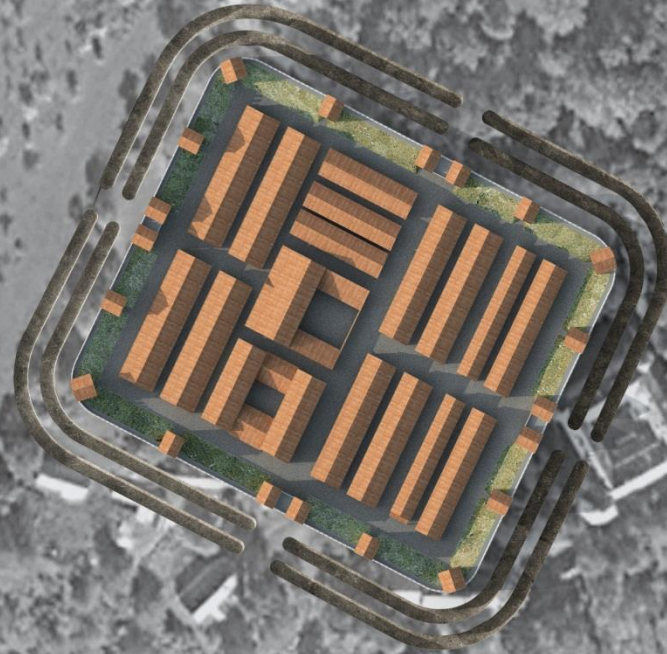


# Sărățeni – 3D top view of the *castra*



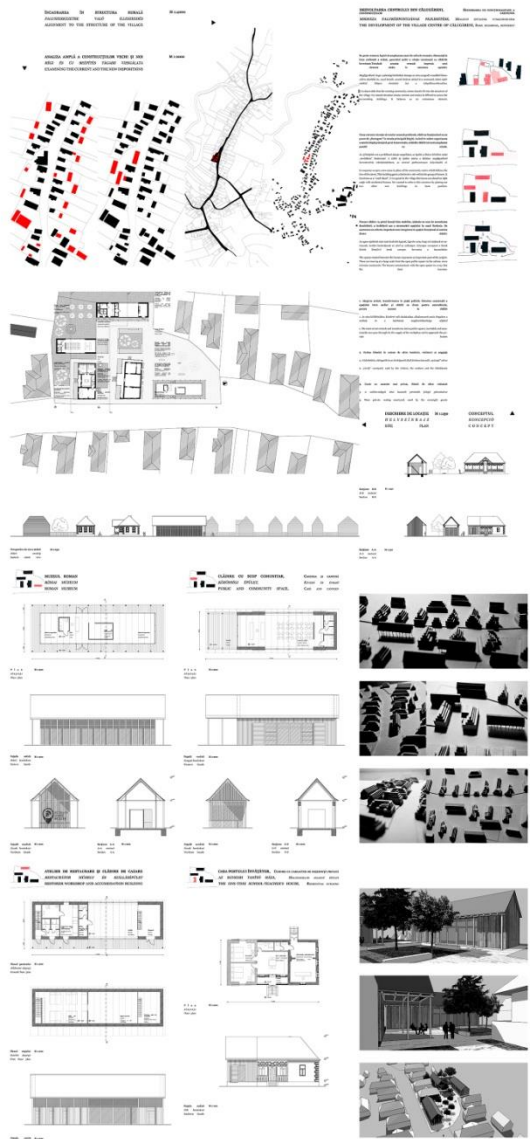


# Brâncovenești – 3D top view of the castra



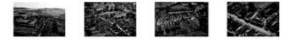


Molnár Bianka, Nusszer Diána

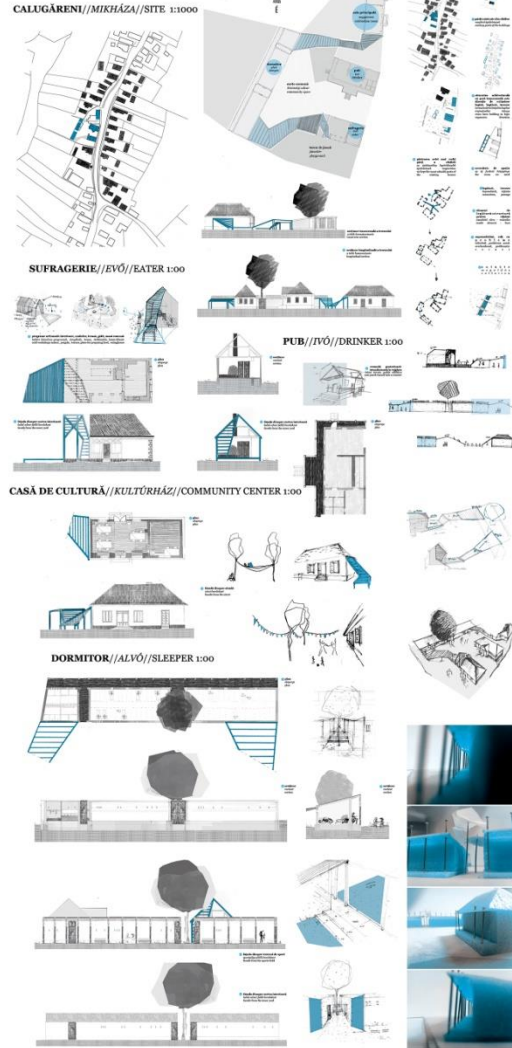


Vizi Kata Veronika, Hulesch Máté, Kádár Sebestyén Énok, Rádler Luca

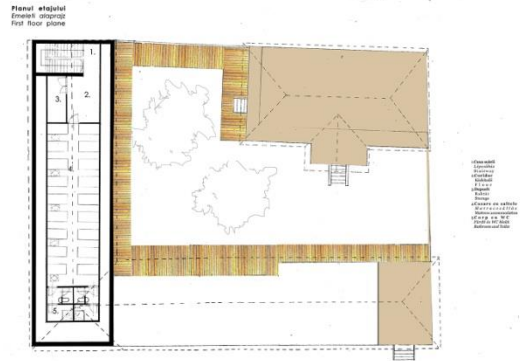
**BAZĂ//BÁZIS//BASE**



bază, loc de cazare, loc de adunare, ospitalitate, tabără pentru copii, masă comună, teren de joacă, sufragerie, pub, dormitor//baza, găzduire, întâlnire, vendegátás, táborhely, játéktér, eed, ivó, alvó//base, meeting-point, accomodation, hospitality, playground



Balogh Edit, Bailo Barbara, Dalmadi Györgyi



///CĂLUGĂRENI//MIKHÁZA///SARAJENI//SÓVÁRAD///VOL2///

///ARCHITECTURAL SURVEY///2014.

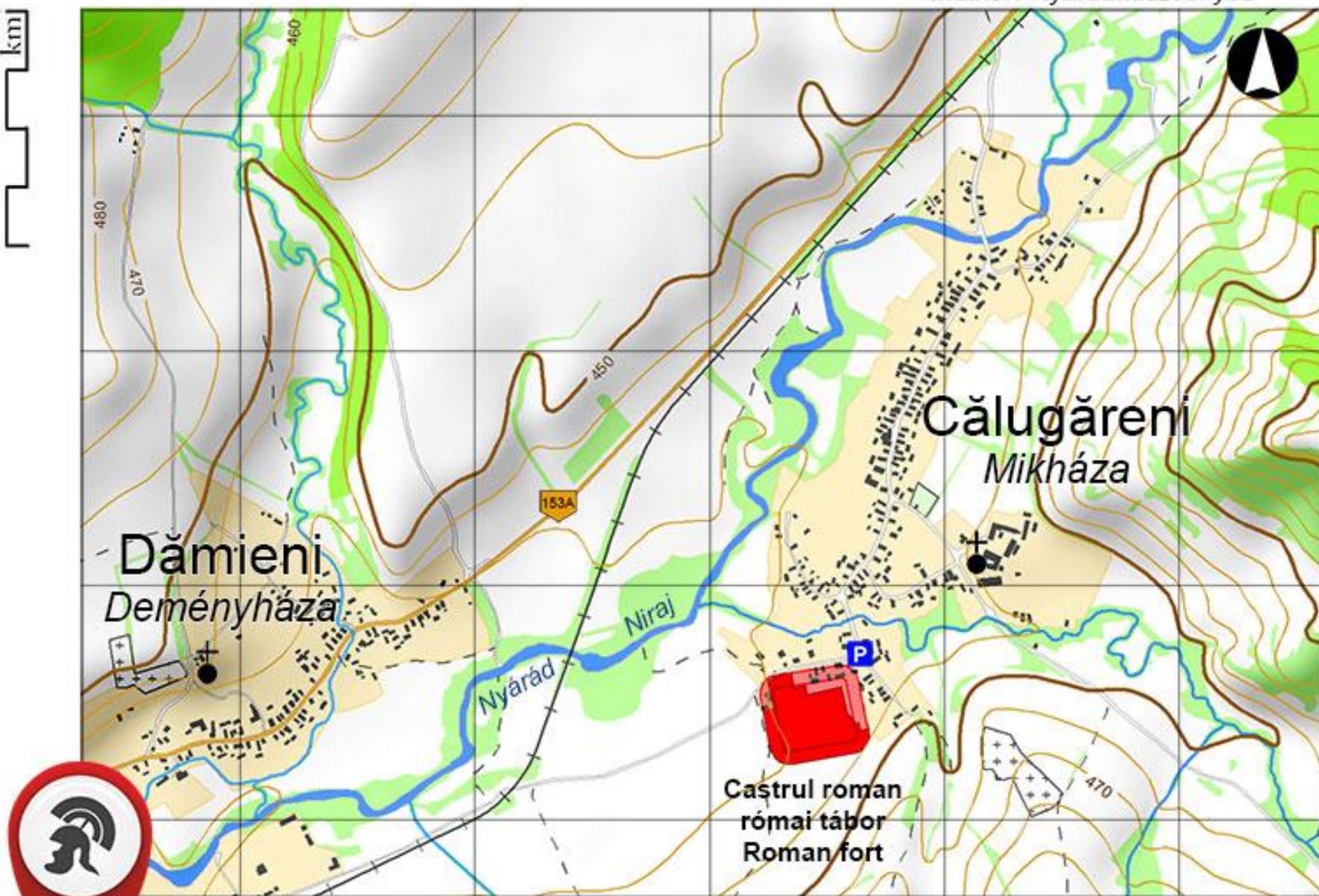
///BAKOS PIROSKA//BALOGH EDIT//BALOGH BÁLINT//BIRŐ KINGA//KELEMEN ANETT//CENDES TÍMEA//VOLDZSI BERNADETT//CSOBOLYA NÓRA//FÜSI ZSÓFIA//HORVÁTH KINGA//KELEMEN ANETT//CENDES TÍMEA//VOLDZSI BERNADETT//LEZSOVICS GERGELY//LÉVAY ÁRON//LŐCSEI VERA//SÁGI GERGELY//SIMÓ NIKOLETT///GAUL CECILLE//VASÁRPOS ZSOLT//







0 0,5 km



Călugăreni / Mikháza Castrul roman / római tábor / Roman fort

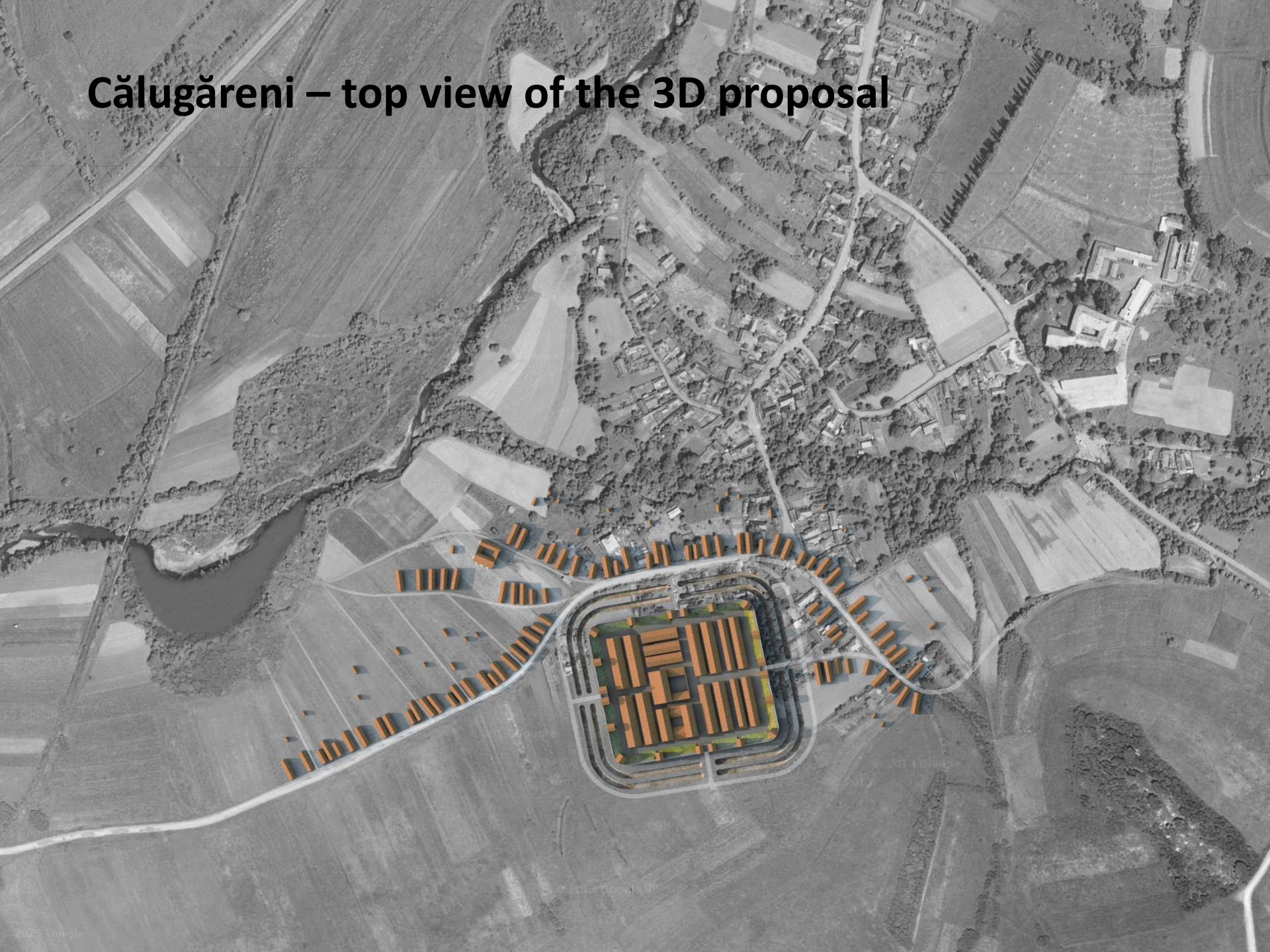


# Călugăreni – geophysical survey





# Călugăreni – top view of the 3D proposal



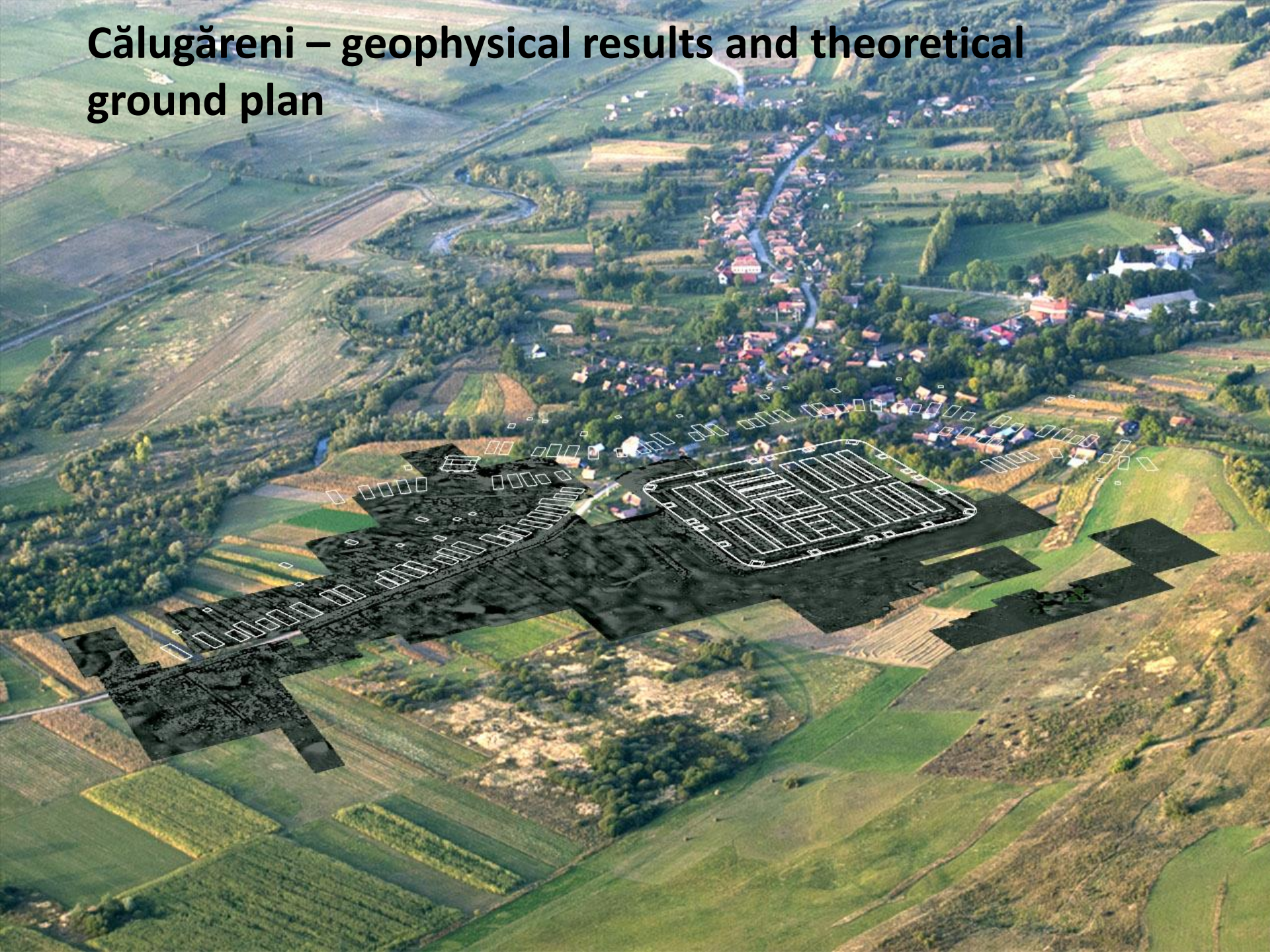


# Călugăreni – aerial photo by Máté Szabó



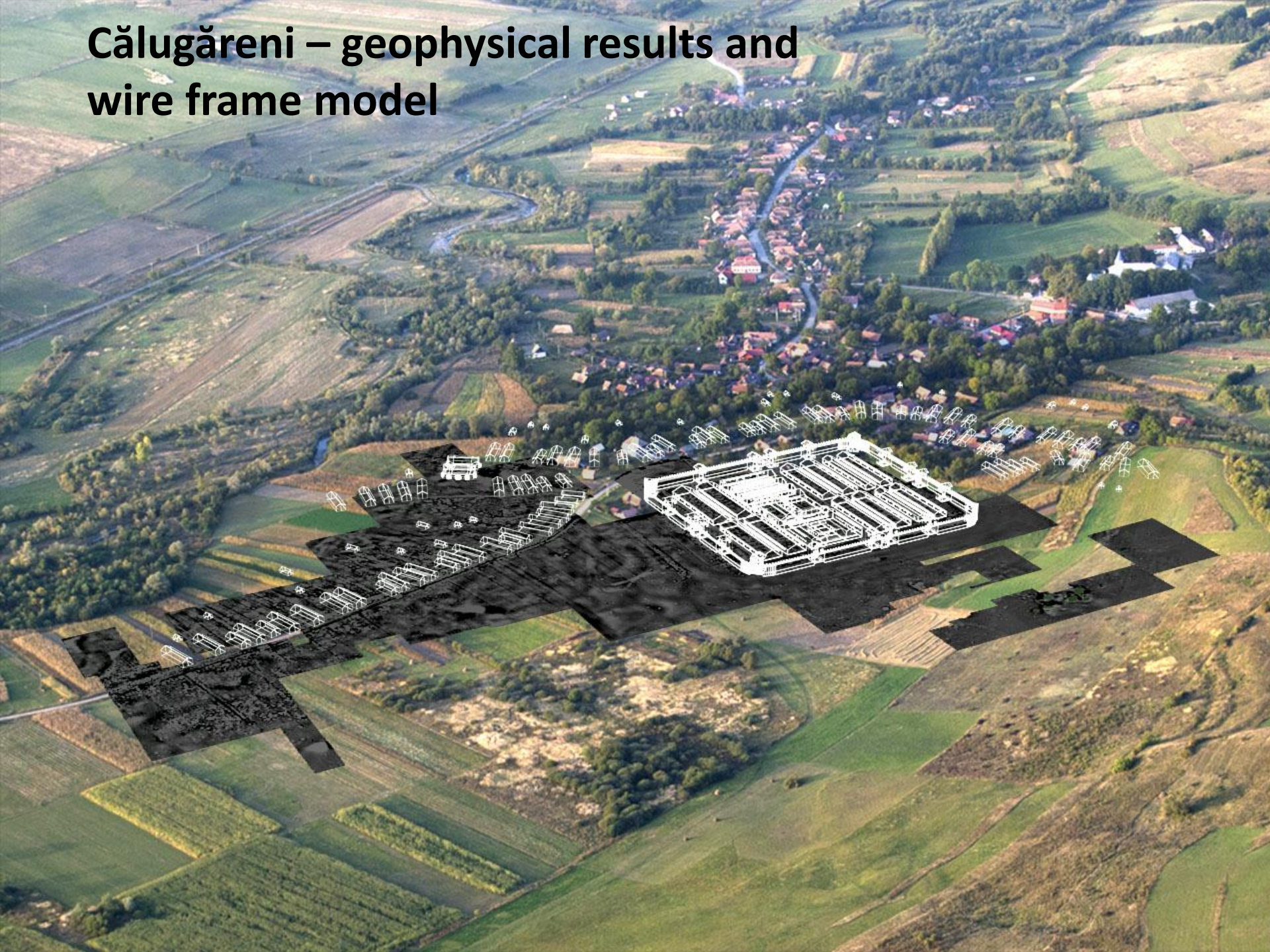


# Călugăreni – geophysical results and theoretical ground plan





# Călugăreni – geophysical results and wire frame model





# Călugăreni – 3D proposal of the *castra* and the *vicus*





# Călugăreni – site of the pavilions





# Călugăreni / Mikháza – realization of the info pavilions / 2015

(Sági G., consultants: Vasáros Zs., Gaul C. és Tövissi Zs.)





# Călugăreni – plan for info pavilions

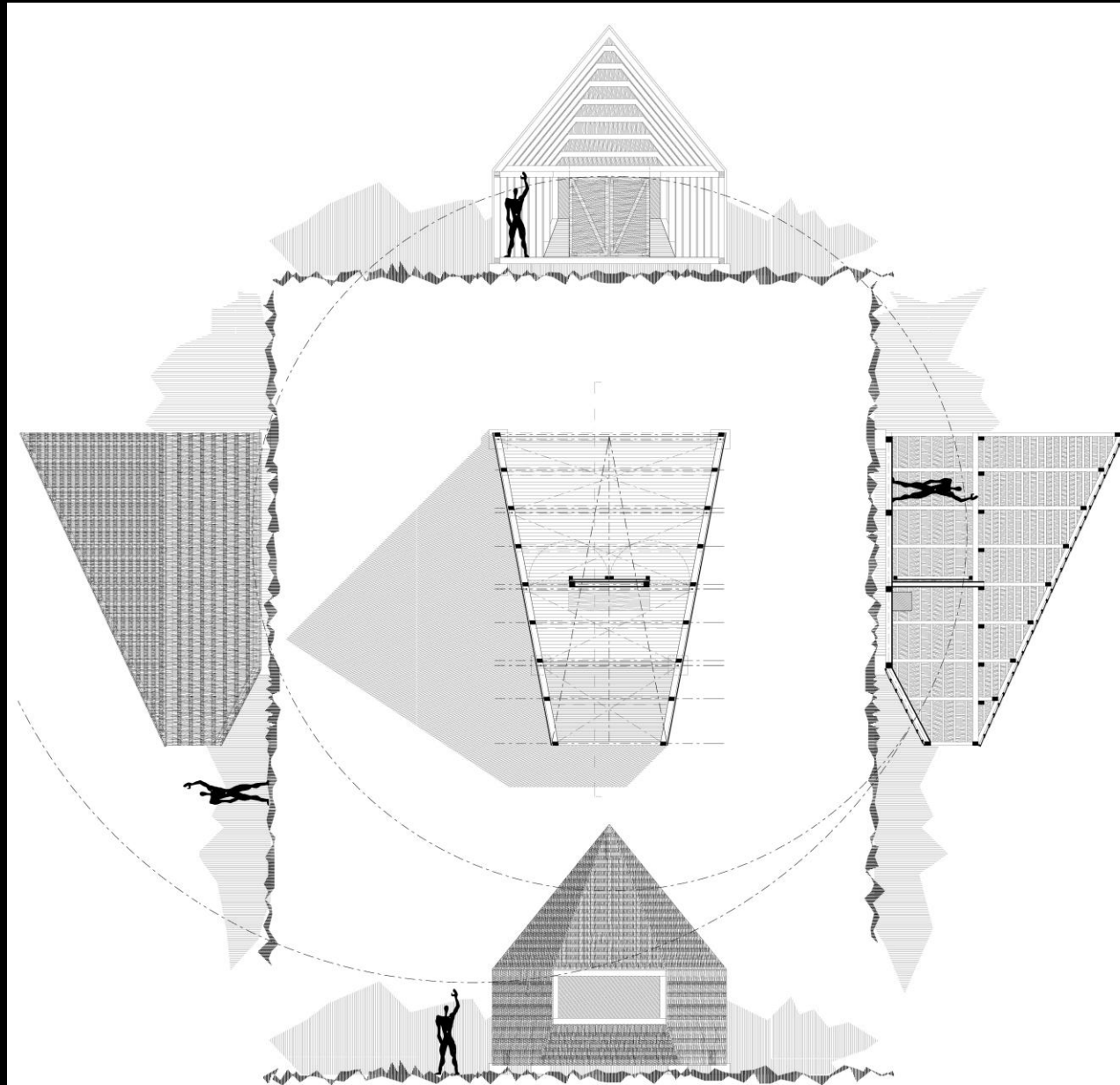
(design by G. Sági 2013, consultants: Zs. Vasáros, C. Gaul and Zs. Tövissi)





# Călugăreni – plan for info pavilions

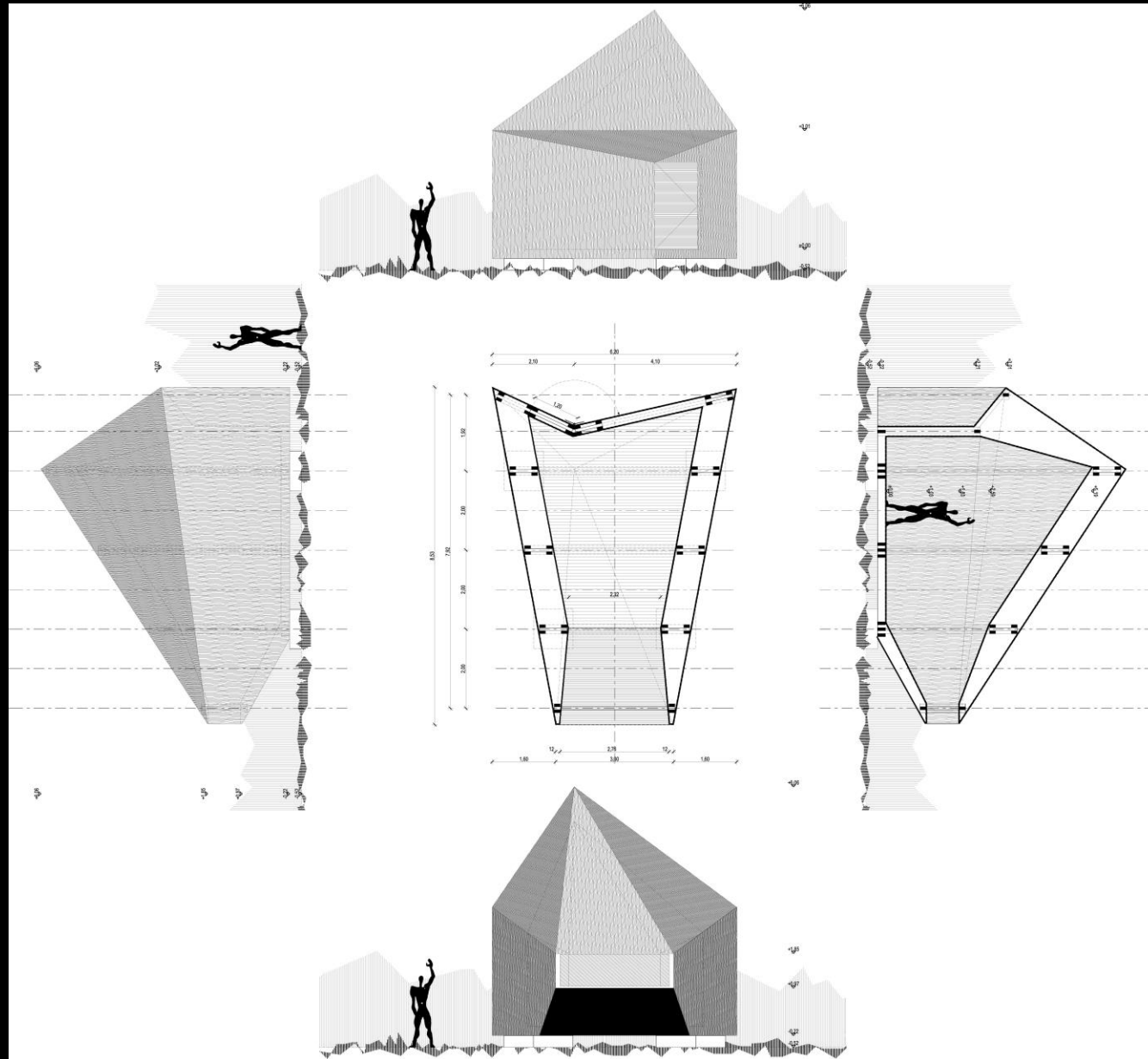
(design by G. Sági 2013, consultants: Zs. Vasáros, C. Gaul and Zs. Tövissi)





# Călugăreni – plan for info pavilions

(design by G. Sági 2013, consultants: Zs. Vasáros, C. Gaul and Zs. Tövissi)





# Călugăreni – the info pavilions, state in august 2015

(design by G. Sági 2013, consultants: Zs. Vasáros, C. Gaul and Zs. Tövissi)





# Călugăreni – the info pavilions, state in august 2015

(design by G. Sági 2013, consultants: Zs. Vasáros, C. Gaul and Zs. Tövissi)





# Călugăreni – the info pavilions, state in august 2015

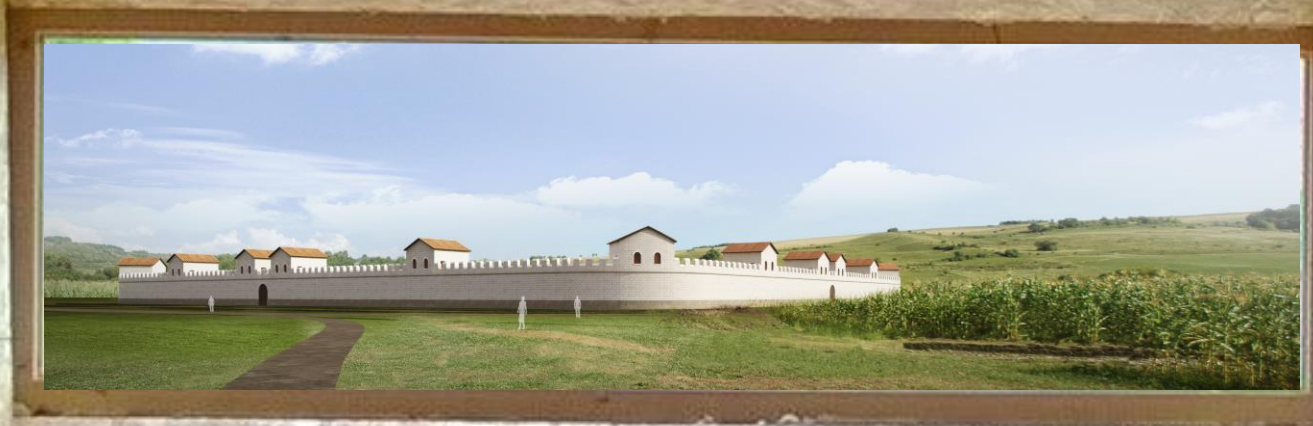
(design by G. Sági 2013, consultants: Zs. Vasáros, C. Gaul and Zs. Tövissi)





# Călugăreni – the info pavilions, state in august 2015

(design by G. Sági 2013, consultants: Zs. Vasáros, C. Gaul and Zs. Tövissi)





# Călugăreni – the info pavilions, state in august 2015

(design by G. Sági 2013, consultants: Zs. Vasáros, C. Gaul and Zs. Tövissi)





# Călugăreni – the info pavilions, state in august 2015

(design by G. Sági 2013, consultants: Zs. Vasáros, C. Gaul and Zs. Tövissi)





# Călugăreni – the info pavilions, state in 2016

(design by G. Sági 2013, consultants: Zs. Vasáros, C. Gaul and Zs. Tövissi)





# Călugăreni – the info pavilions, state in 2016

(design by G. Sági 2013, consultants: Zs. Vasáros, C. Gaul and Zs. Tövissi)





# Călugăreni – the info pavilions, state in 2016

(design by G. Sági 2013, consultants: Zs. Vasáros, C. Gaul and Zs. Tövissi)





# Călugăreni – the info pavilions, state in 2016

(design by G. Sági 2013, consultants: Zs. Vasáros, C. Gaul and Zs. Tövissi)





IDENTITATE ȘI CULTURĂ  
IDENTITÁS ÉS KULTÚRA  
IDENTITY AND CULTURE

( Noi peisaje, noi dimensiuni  
Új tájak, új dimenziók  
New landscapes, new dimensions ) 3

6 - 30 ( Mai / Május / May ) 2016

Sala de expoziții din Cetate a Muzeului Județean Mureș

A Maros Megyei Múzeum várbeli kiállítóterme  
The exhibition hall of the Mureș County Museum from the Castle

Târgu Mureș  
Marosvásárhely

TIME  
BOX  
CĂLUGĂRENI  
MIKHÁZA



THE ROMAN  
LIMES AS  
CULTURAL  
LANDSCAPE



IPARTANSZÉK



uefiscdi



CONSILIUL  
JUDEȚEAN  
MUREȘ



MAROS  
MEGYEI  
TANÁCS



ROMAN LIMES ROUTE  
TRASĂRUL LIMESULUI ROMAN  
ROMAI LIMES ÚTVONAL



ROMAN LIMES ROUTE  
TRASĂRUL LIMESULUI ROMAN  
ROMAI LIMES ÚTVONAL



ROMAN LIMES ROUTE  
TRASĂRUL LIMESULUI ROMAN  
ROMAI LIMES ÚTVONAL



transindex



TVR



E



ETV



ETV



ETV



ETV



ETV



ETV



ETV



ETV



ETV



ETV



ETV



# Călugăreni – site of the pavilions and the look out point





# Călugăreni – plan for look out point

(design by V. Lócsei and M. Ruga 2014, consultant: Zs. Vasáros)





# Călugăreni – plan for look out point

(design by V. Lőcsei and M. Ruga 2014, consultant: Zs. Vasáros)





# Călugăreni – pavilions, look out point and the 3D





# Călugăreni – 3D proposal of the *castra* and the *vicus*





# Călugăreni – principia





# Călugăreni – principia



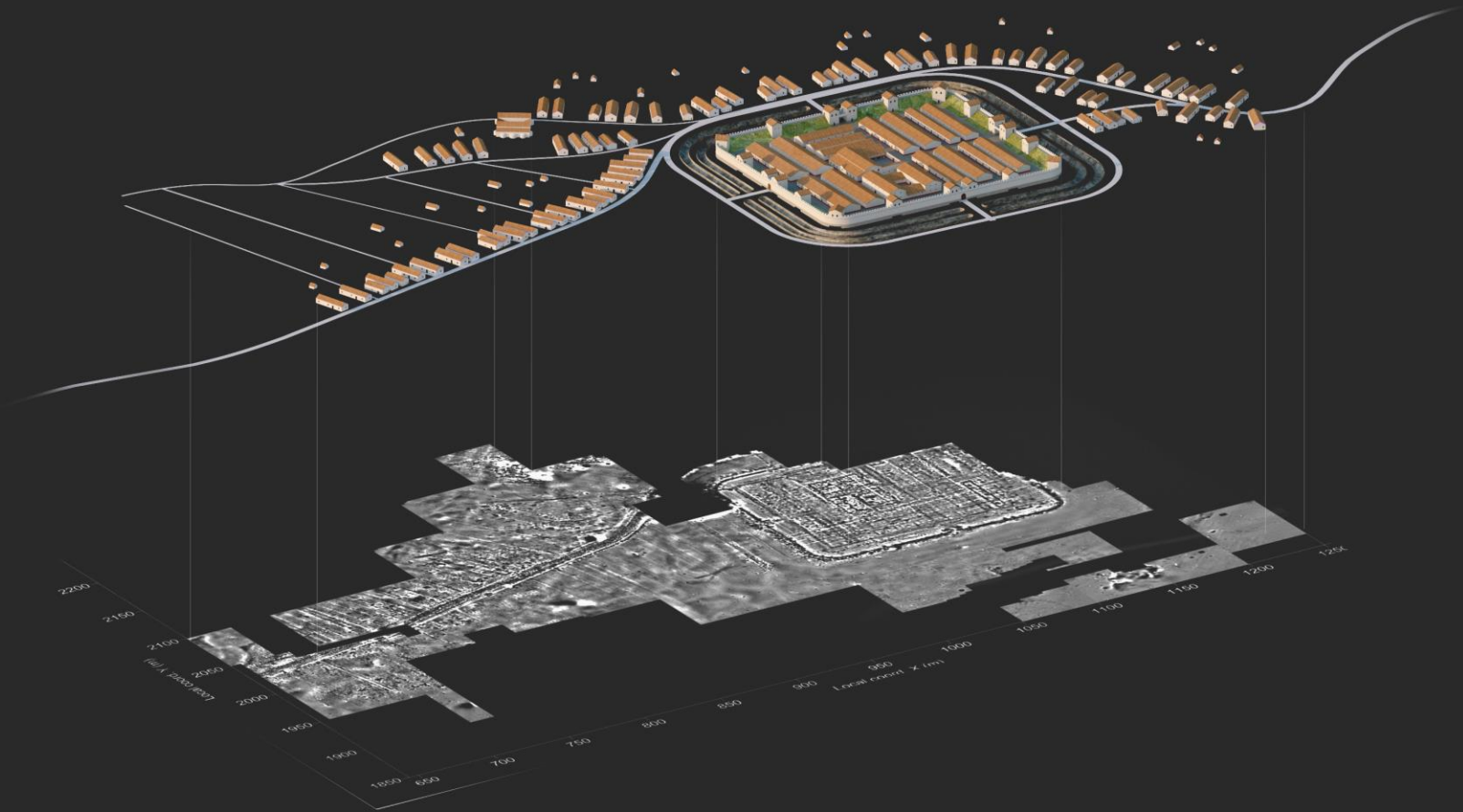


# Călugăreni – the 3D view of the roman fort





# Călugăreni – teh geophysical survey and the 3D view







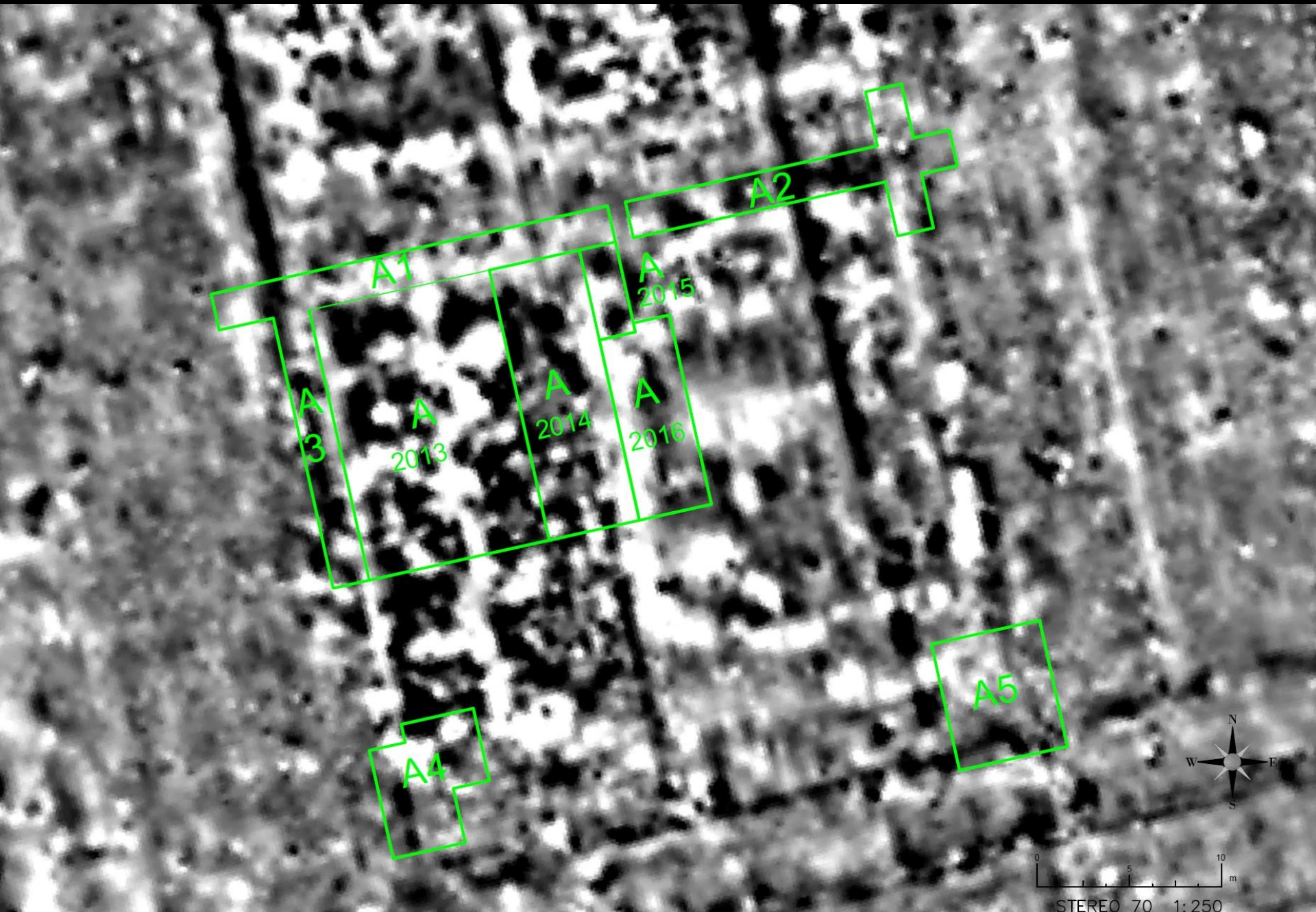


# Călugăreni – pavilions, look out point and the 3D



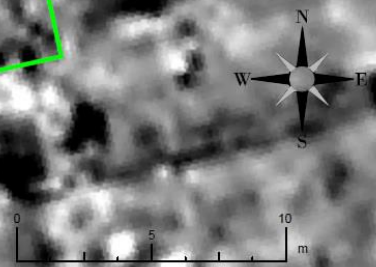
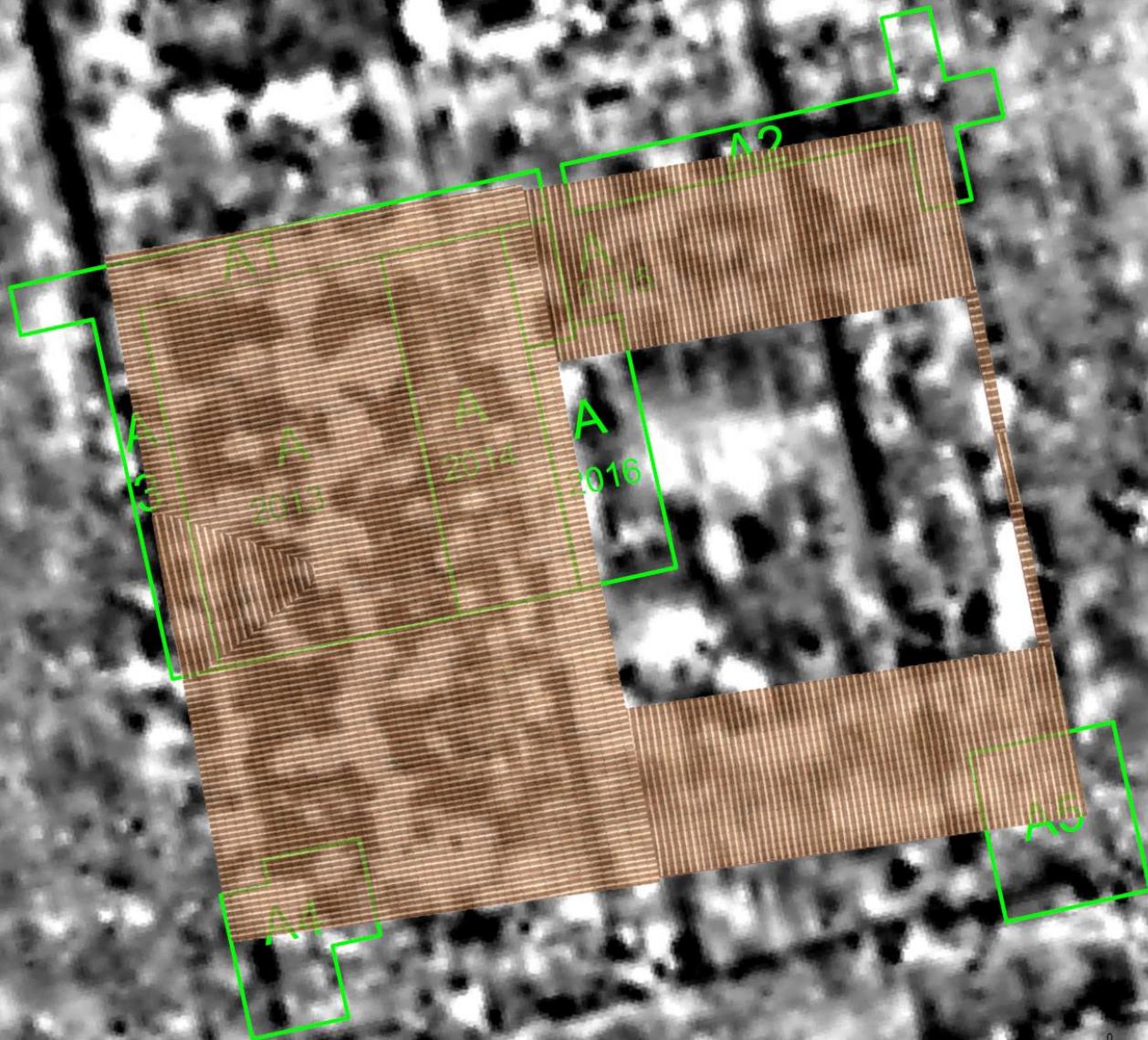


# Principia –geophysical survey



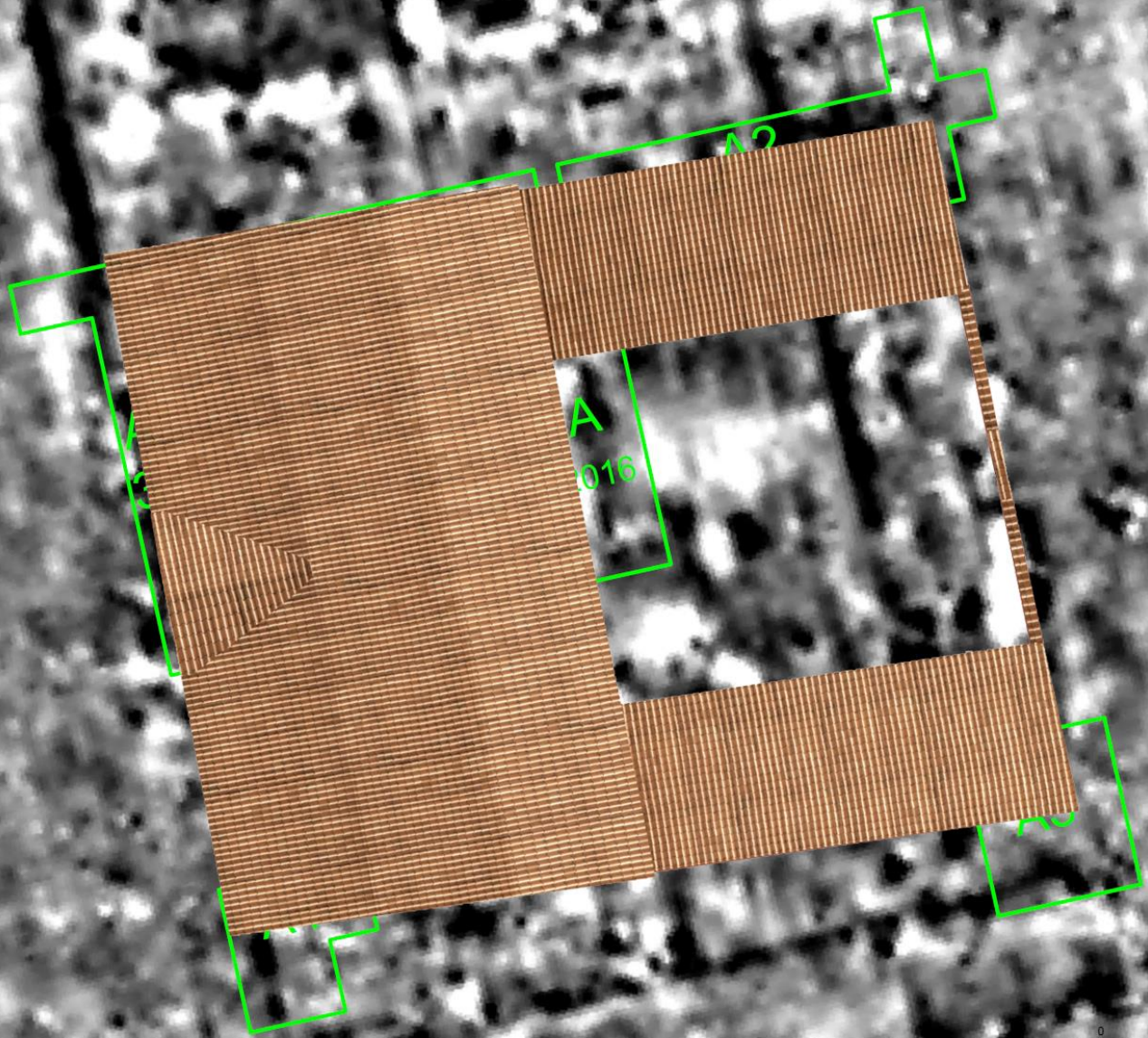


# Principia –geophysical survey+roof contour





# Principia –geophysical survey+roof contour

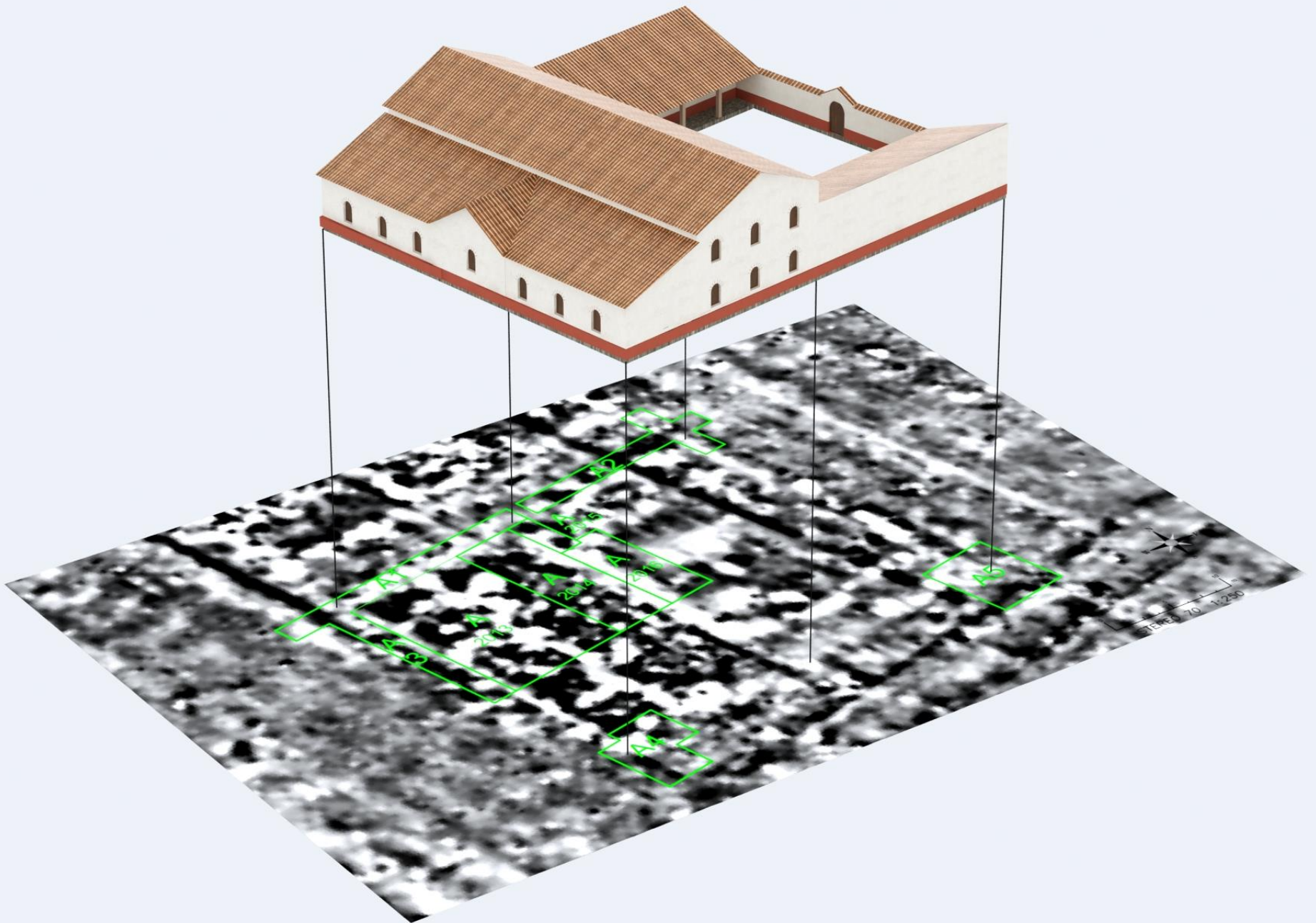


STEREO 70 1:250











# Călugăreni – ruins of the *principia*





# Călugăreni – the excavation area





# Călugăreni – the site of the roman fort

